

FP-3000STS

Flat-Panel Display for Honeywell Classic Universal Stations

NO BEZEL CHANGE REQUIRED

A high quality replacement display

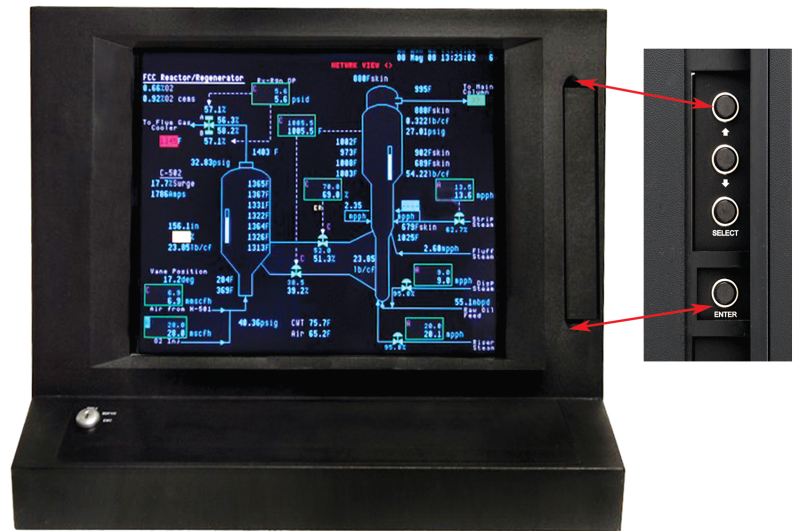
The FP-3000STS is an LED-Backlit flat panel monitor with touchscreen. It is designed to be a replacement for the 18" Sony CRT or LCD-type display in Honeywell Classic Universal Stations utilizing the EPDG/EPDGP video system. This monitor does not require a bezel change only removal of existing touchscreen and menu control.

Integrated flat touch screen

The FP-3000STS comes with a flat infrared touch screen mounted to the front of the display. This touch screen is mounted a few millimeters from the display surface, and eliminates "false picks" sometimes seen with the old touch screen because of its distance from the screen. Purchase includes Serial or USB connection options.

Bright image, durable screen

The LCD plastic surface is protected by a glass antiglare layer attached to the front of the display. This durable surface protects the LCD from wear scratches that any plastic surface eventually suffers after repeated cleaning (or touching with fingers, pencils, or sharp objects). The antiglare treatment of the glass combined with the inherent low-glare characteristics of a flat display results in a high-contrast display that is easy on the eyes.



Low maintenance

The solid-state design of the flat-panel LED-Backlit display provides inherent reliability, low power consumption, and low maintenance. The setup mode is entered by pressing and releasing "ENTER". A pop-up menu window appears on the monitor screen. This is the main menu and contains a list of function categories. Scroll to the category you desire by pressing "INCREASE" or "DECREASE" until the category you desire is highlighted, then press "SELECT". This allows you to access the functions within that category.

Specifications

Viewable Area: 18" diagonal (14.81" x 11.85")

Viewing Angle: 170° horizontal, 170° vertical

Power Consumption: 30 watts, 110VAC/240VAC

Display modes supported: VGA 640x480 through VESA 1280x1024, includes EPDG scan frequency. 15-pin connector, 9-pin adapter available.

Brightness: 300 cd/m²

Operating Environment: Temperature 0-50°C, Relative Humidity < 90% at < 40°C

Weight: 8.8 kg, (17.4 lbs)



WESTERN PROCESS COMPUTERS, INC.
2033 W. NORTH LANE, SUITE 14
PHOENIX, AZ 85021

Phone: 602-997-7245
Fax: 602-997-7248
info@westernprocess.com
www.westernprocess.com